

4

Providence, R.I.  
This plat accompanies  
our report of this date

PROVIDENCE, R. I.  
CITY ENGINEER'S OFFICE  
STREET LINE DEPT.

Nov. 8, 1888

014459

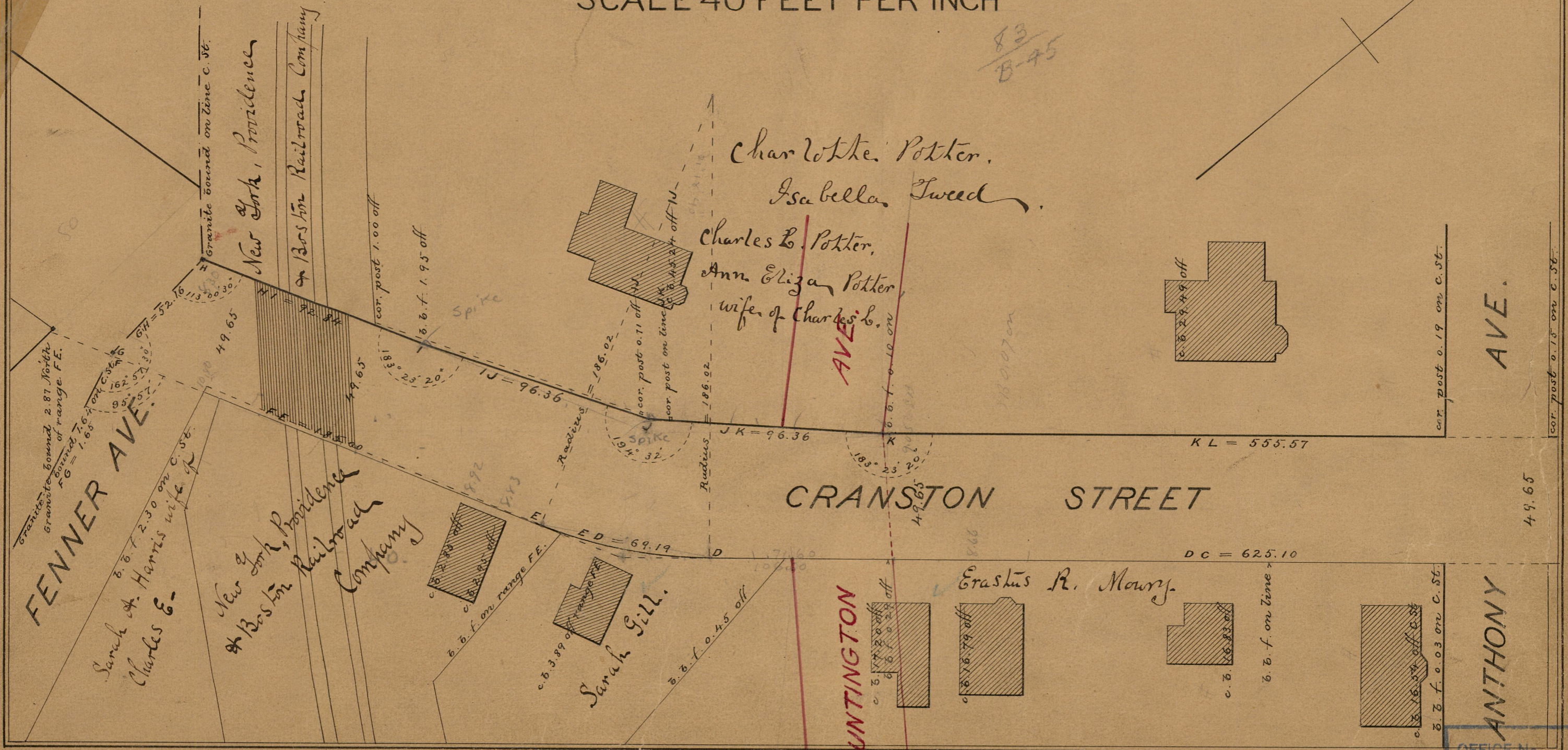
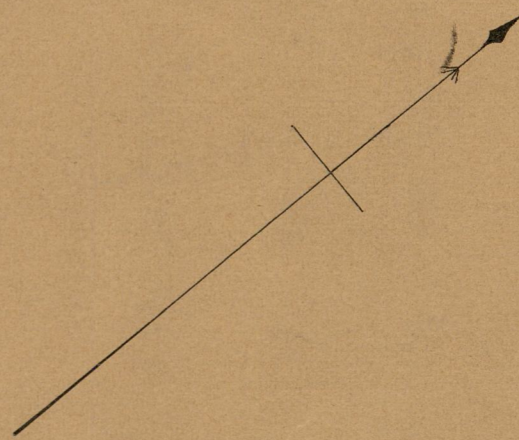
# PLAT OF CRANSTON STREET

FROM FORMER CITY LINE TO PRESENT CITY LINE

IN FOUR SHEETS

SCALE 40 FEET PER INCH

83  
B-45



cor. post 0.19 on C. St.

AVE.

cor. post 0.15 on C. St.

49.65

ANTHONY

83  
B-45

OFFICE No. 9870

DRAWER 83

SHEET B-45